

COMPACT DIAL INDICATOR

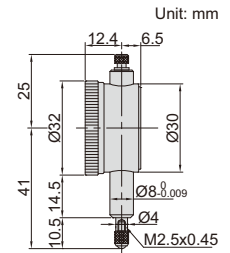
INSIZE PLUS
MADE IN EUROPE

**INSPECTION
CERTIFICATE**
TRACEABLE TO NIST

- Meet DIN878
- With limit pointers
- Optional accessory: backs (page 176~177), contact points (page 173~175)



2886-3F



Code	Range	Graduation	Accuracy	Hysteresis	Range/rev	Dial reading	Remark
2886-3F*	3mm	0.01mm	12µm	3µm	0.5mm	0-50	flat back

*Supplied with manufacturer inspection certificate traceable to NIST USA

7

COMPACT DIAL INDICATORS

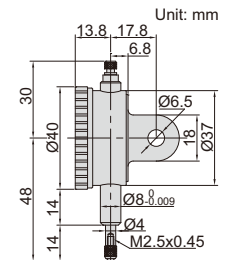
INSIZE PLUS
MADE IN EUROPE

**INSPECTION
CERTIFICATE**
TRACEABLE TO NIST

- Meet DIN878
- With limit pointers
- Optional accessory: backs (page 176~177), contact points (page 173~175)



2887-5



Code	Range	Graduation	Accuracy	Hysteresis	Range/rev	Dial reading	Remark
2887-5*	5mm	0.01mm	14µm	3µm	0.5mm	0-50	lug back
2887-5F*	5mm	0.01mm	14µm	3µm	0.5mm	0-50	flat back

*Supplied with manufacturer inspection certificate traceable to NIST USA

LARGE DIAL FACE DIAL INDICATOR

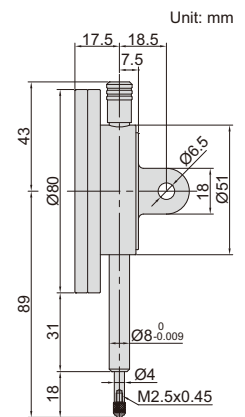
INSIZE PLUS
MADE IN EUROPE

**INSPECTION
CERTIFICATE**
TRACEABLE TO NIST

- Large, easy-to-read dial face
- With limit pointers
- Optional accessory: backs (page 176~177), contact points (page 173~175)



2888-10



Code	Range	Graduation	Accuracy	Hysteresis	Range/rev	Dial reading	Remark
2888-10*	10mm	0.01mm	17µm	5µm	1mm	0-100	flat back, with spare lug back

*Supplied with manufacturer inspection certificate traceable to NIST USA